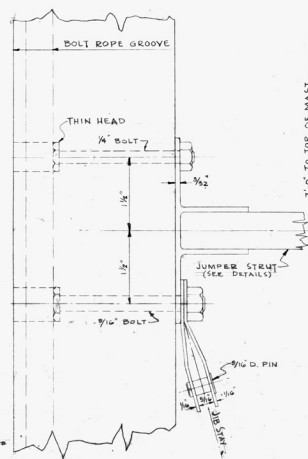
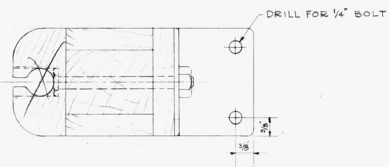


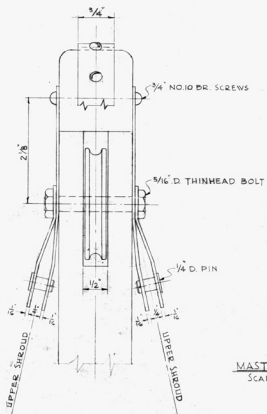
CAST B7. TANG FOR LOWER SHROUDS
& SPREADERS
SCALE: FULL SIZE

SIMILAR
BRACKETS ON BOTH
SIDES OF THE MAST.

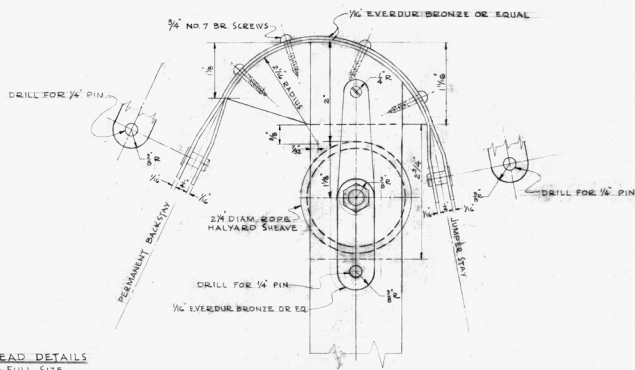
NOTE: CASTINGS TO BE BRONZE WITH
MIN TENSILE STRENGTH OF 60,000
PER SQ. IN.
8 PIN
BOLTS TO BE EVERDUR BRONZE
OR EQUAL



CAST B2 TANG FOR JIB STAY
& JUMPER STRUTS
SCALE: FULL SIZE



MASTHEAD DETAILS
SCALE: FULL SIZE



JOB NO 608
19 FT. O.A. C.B. SLOOP
TANG & MASTHEAD DETAILS
DWG. NO 808B
SCALE: FULL SIZE
PHILIP L. RHODES
NAVAL ARCHITECT S
118 WAY N.Y.C. 4